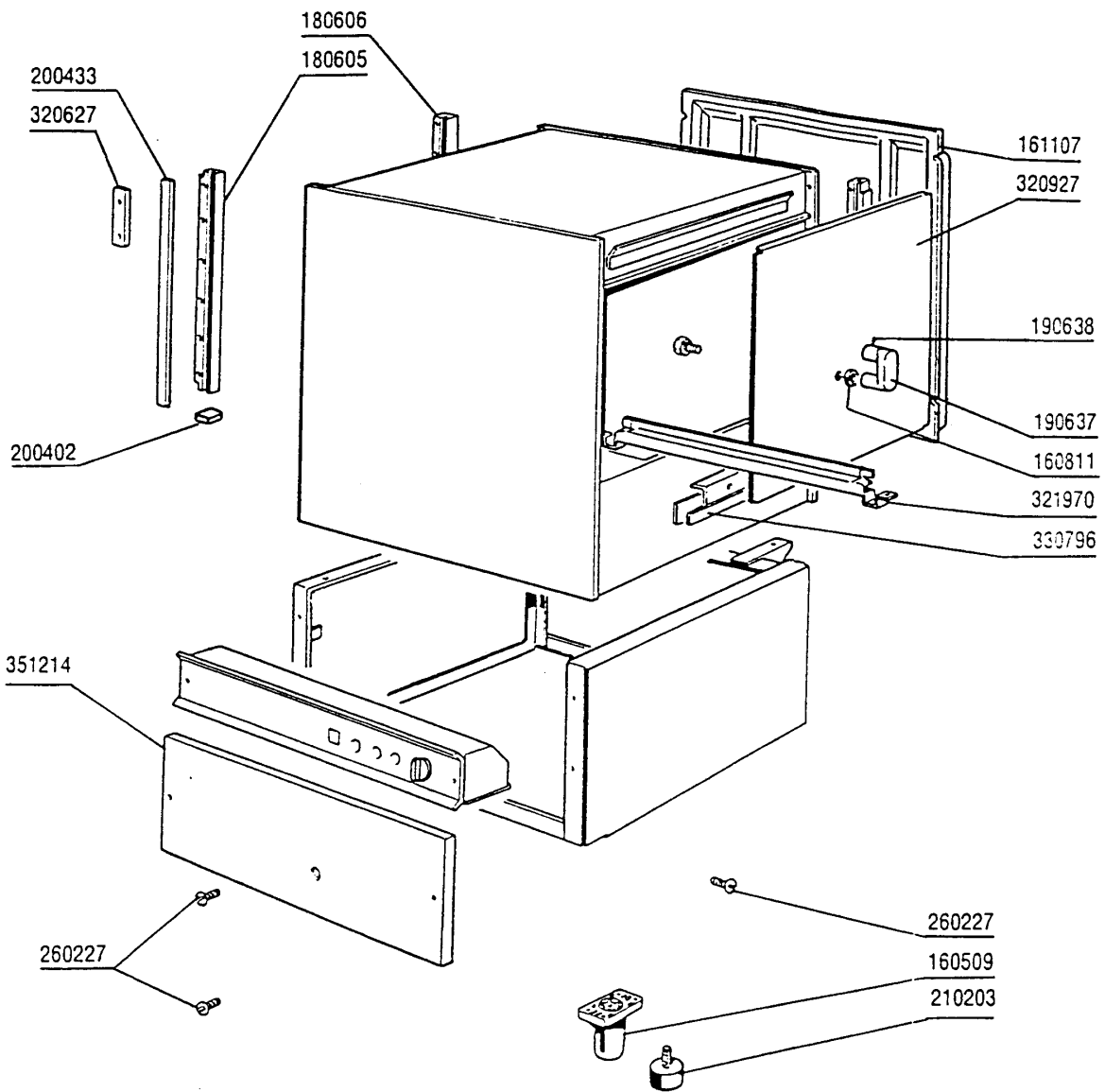


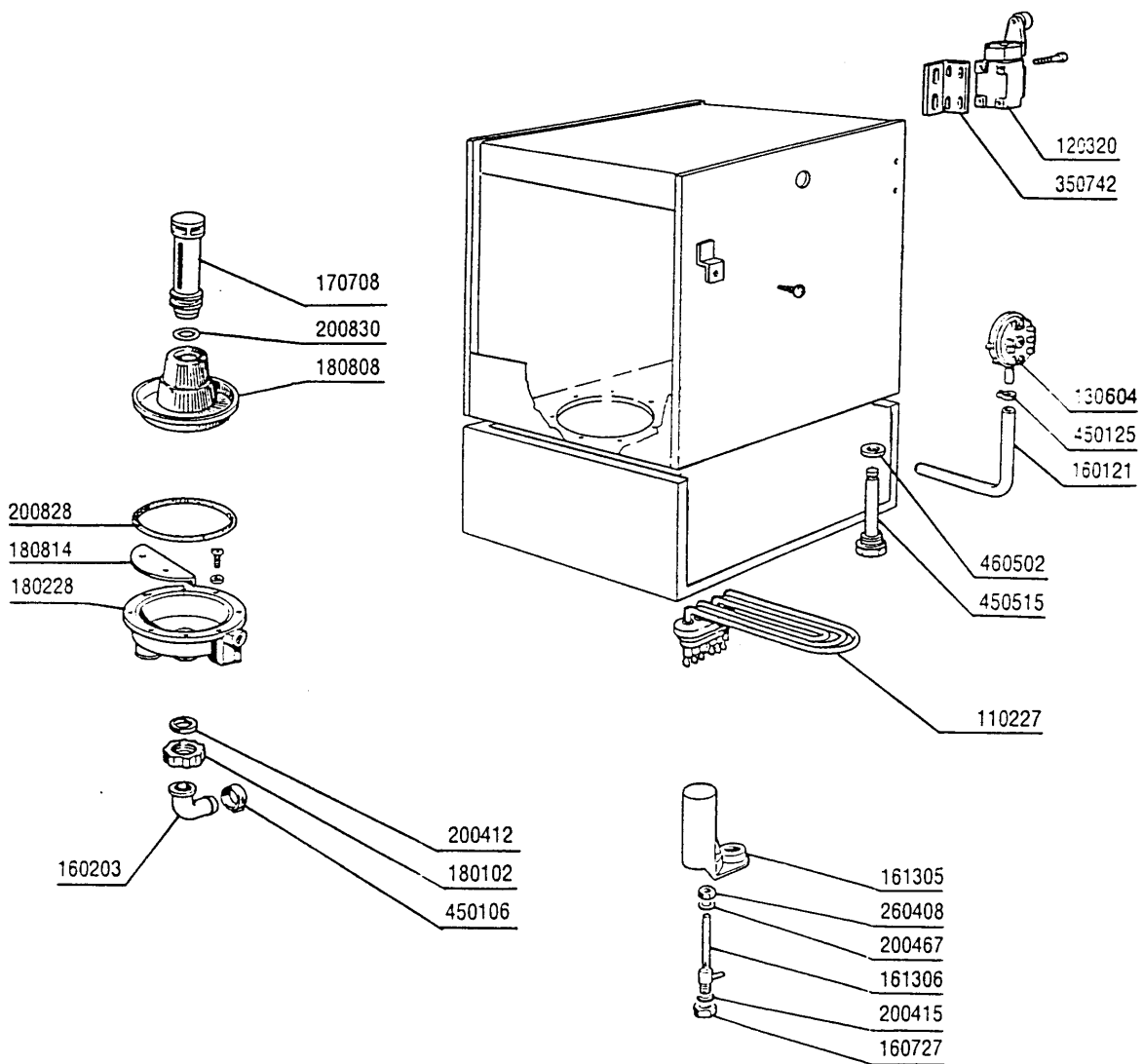
2 - Hood



2 - Hood

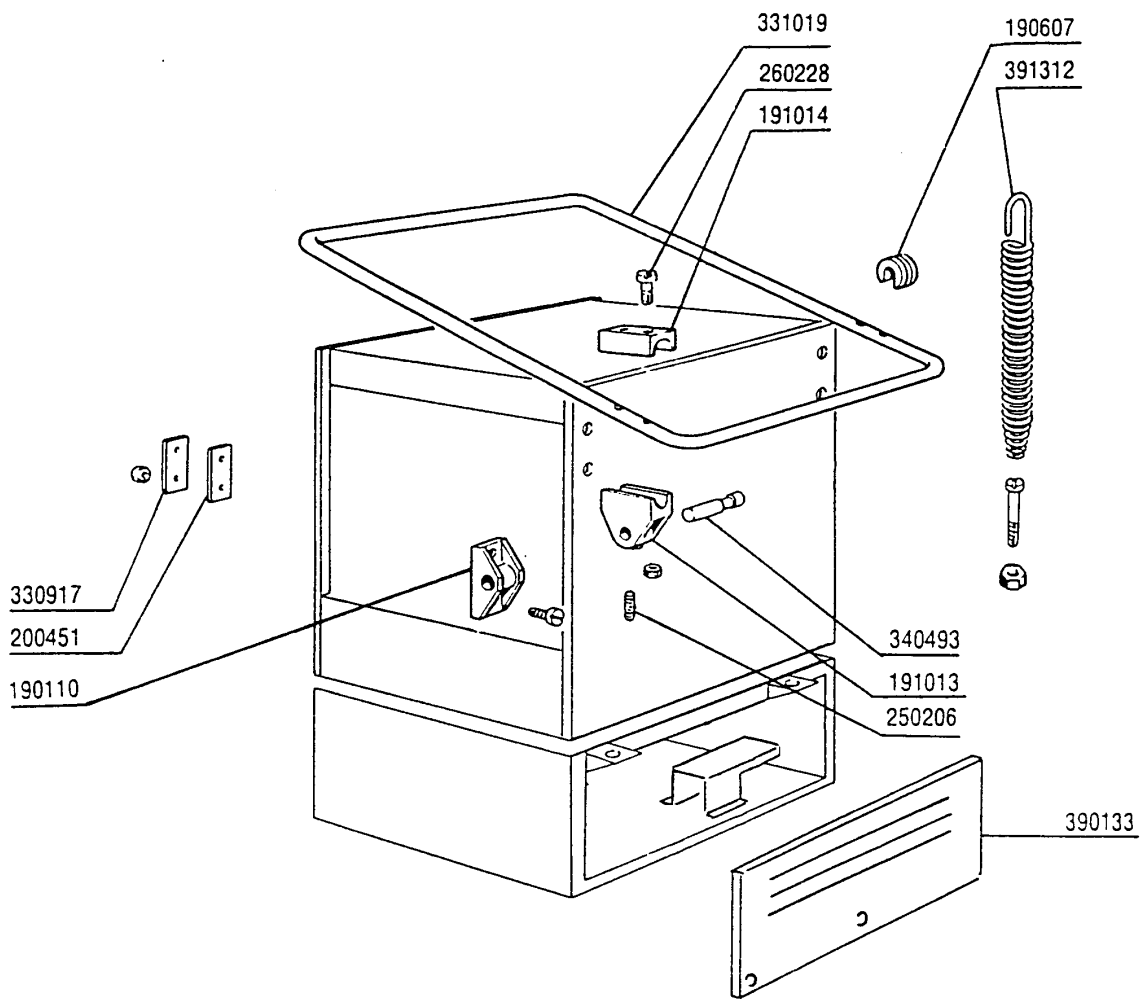
CODE	DESCRIPTION
160509	FOOT SUPPORT
160811	WASHER F2 18X8.5X1 ALGOF
161107	BACK COVER C30 C70
180605	RIGHT GUIDE F. DOOR C30-70
180606	LEFT GUIDE F. DOOR C30-70
190637	GUIDE FOR DOOR "C"
190638	ROLLER FOR "C" DOOR GUIDE
200402	SELF-ADHES.RUBB.SPONGE STRIPS
200433	SPONGY RUBBER RECT. 6X2,5 ADHE
210203	RUBBER FOOT 30 MM
260227	M5 X 30 MUSHROOM HEAD SCREW
320627	FIXING PLATE F.GUIDES C30-70
320927	DOOR C30 C70
321970	GUIDE
330796	SPLASH GUARD C30 C70
351214	FRONT PANEL C70

3 - Tank



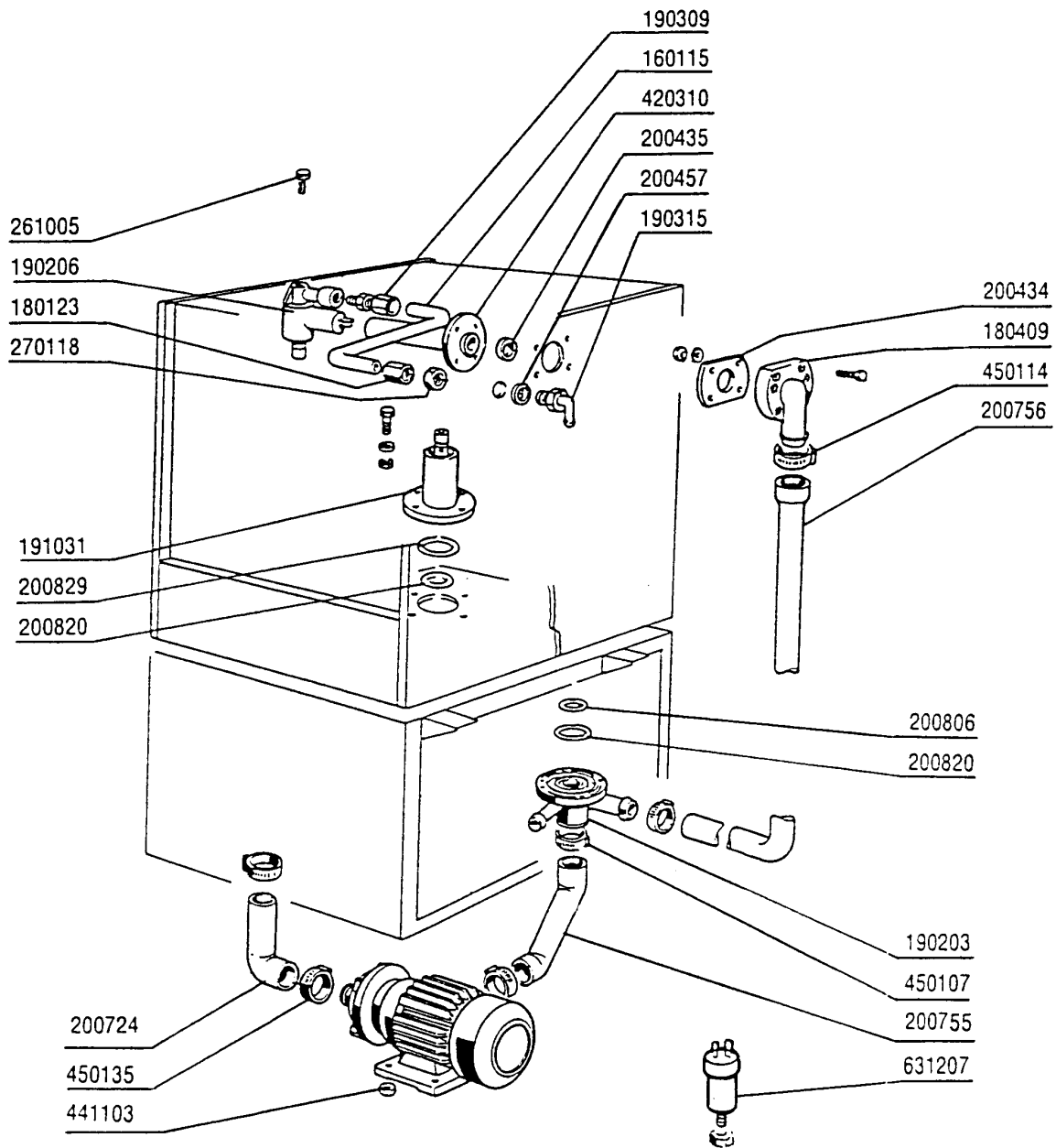
3 - Tank

CODE	DESCRIPTION
110227	HEAT. ELEMENT 3000W 230/400V
120320	LIMIT SWITCH WITH LEVER
130604	PRESSURE SWITCH 80-50 1 LEVEL
160121	HOSE EPDM D. 5 X 9
160203	ELBOW 1"1/2 N-S-F-C /DRAIN
160727	PLUG 1/2 NTP CAP
161305	AIR CHAMBER F45-F80
161306	HOSE FOR AIR CHAMBER F45-80
170708	OVERFLOW PIPE H 215 X F3 C30-F
180102	DRAIN PIPE NUT 1"1/2 F45-55
180228	TANK SUCTION BASIN WITHOU.PRES
180808	STRAINER F2-45-55-80
180814	PROTECT.FILTER OF INLET PUMPE
200412	GASKET DRAIN 11/2" 45X33X3
200415	AIR TRAP GASKET -F2 18,5X10X3
200467	DUTRAL GASKET F. AIR TRAP
200828	O-RING 183,75X190,81X3,53
200830	O-RING 37,3X44,5X3,6
260408	S/S NUTS D.12
350742	BRACKET FOR MICRO HOOD C34-C14
450106	CLAMP FE ZN 32-44 H=12,2
450125	ELASTIC CLAMP D. 10,4X9,8
450515	STAINL.ST.SHIELD FOR 1 THERMOS
460502	GASKET 30X21X2



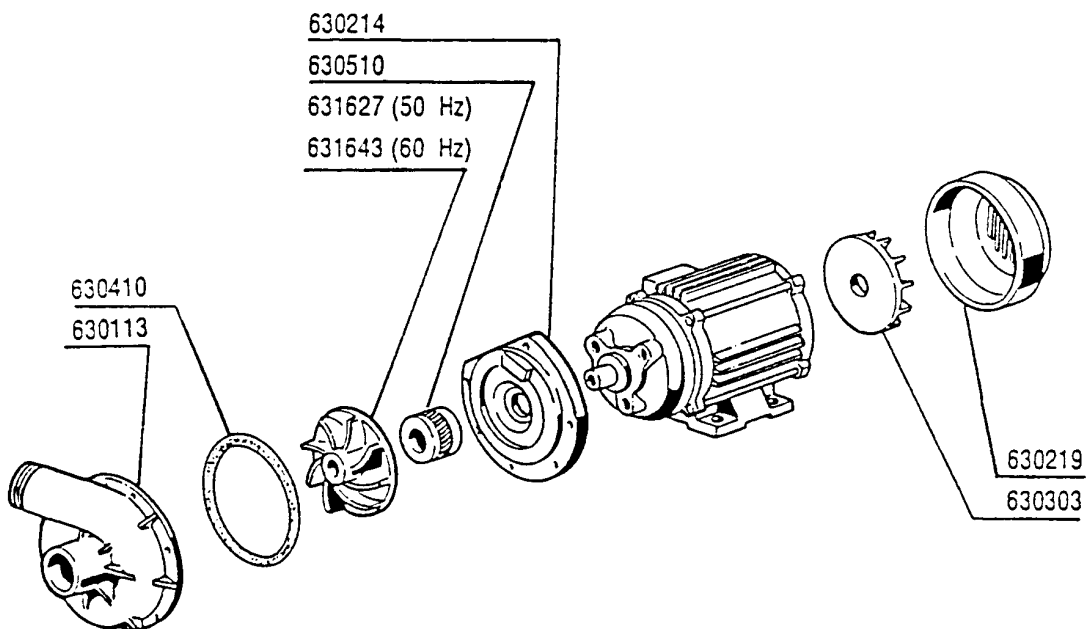
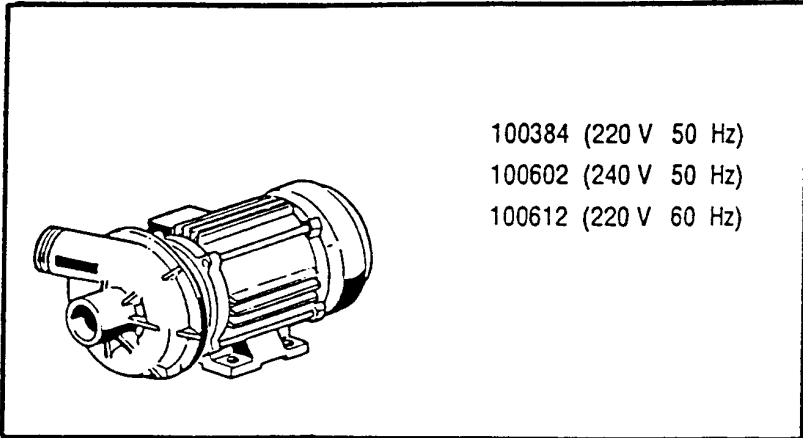
4 - Handle

CODE	DESCRIPTION
190110	SUPPORT HANDLE C30 BLACK
190607	HANDLE BUSH C30-70
191013	HINGE F. SUPPORT C30-C70
191014	FLANGE F. HANDLE C30-70
200451	GASKET COUNTERFL.C30 30X100X3
250206	GRUB SCREW D.6
260228	STAINL.ST SPECIAL SCREW 6X42 3
300917	NIPPLE "T"
331019	HANDLE C70
340493	PIN F. HINGE C30
390133	BACK PANEL C70
391312	SPRING HANDLE C30-C70



5 - Wash

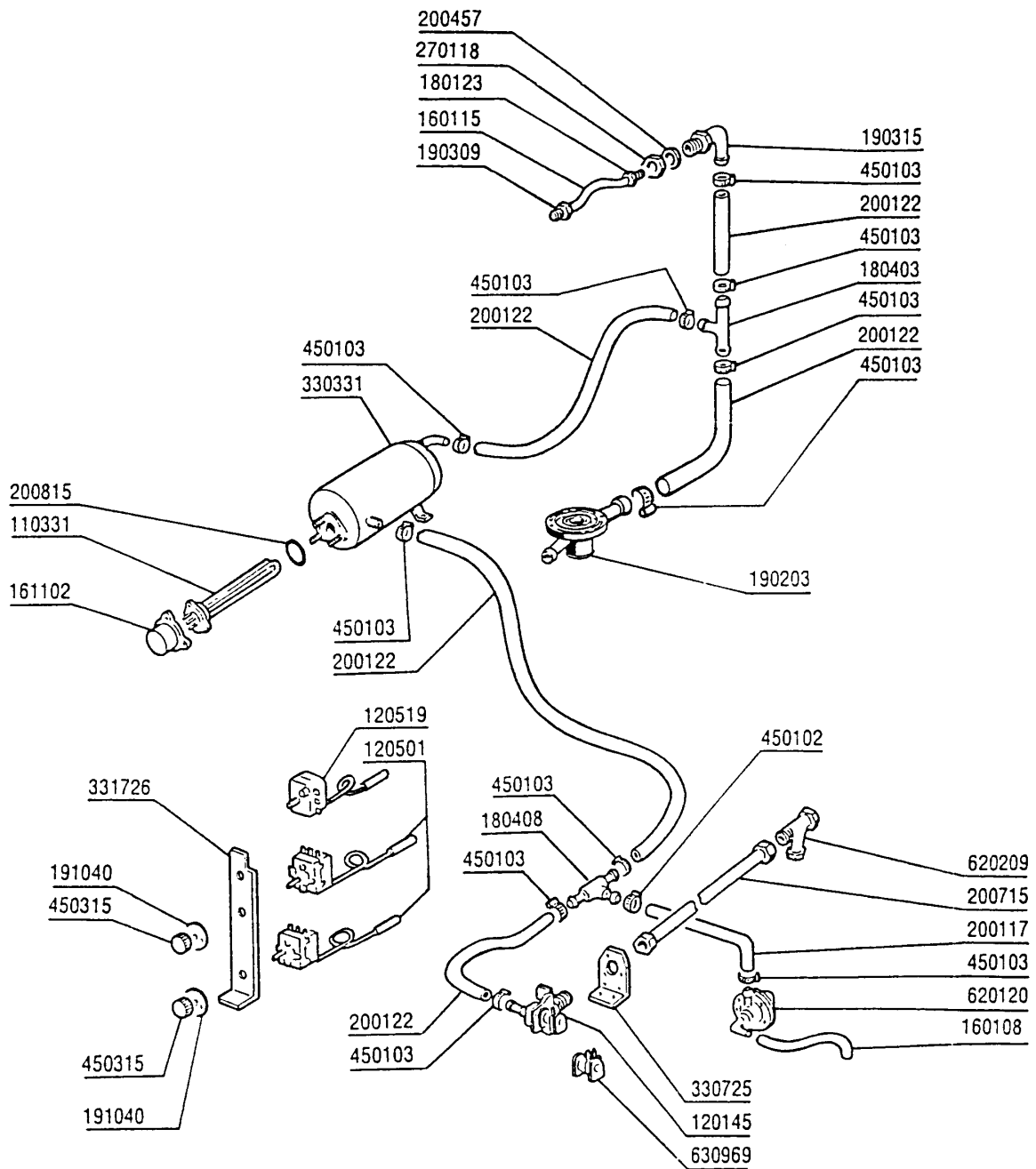
CODE	DESCRIPTION
160115	PL.TUBE.D.9.5 B41 (3/8) C30-
180123	CONNECTION NUT / RINSE 5/8 C30
180409	UPPER CONNECTOR F. WASHING C30
190203	LOWER TEE WASH-RINSE F2-45-55-
190206	UPPER WASH-RIN ARM SUPPORT C30
190309	CONNECTION STRAIGHT 3/8"B41C30
190315	ELL RINSE C30-70
191031	LOWER WASH ARM SUPPORT C30-F80
200434	GASKET CONNECTION C30 R50
200435	GASKET WASH.F2 D.40 C30-70
200457	GASKET D.24X16X3 NEOPRENE
200724	PUMP INLET HOSE C30 - C70
200755	DELIVERY HOSE C70
200756	WASH HOSE UPPER/LOWER C70
200806	O-RING 2,62X13,10X18,34
200820	O-RING151 46,99X5,33X57,6
200829	O-RING 81,92X92,58X5,33
261005	SCREW F. TEE UP.WASH F2-B41
270118	NUTS FOR ELBOW 5/8 C30-70
420310	LOW./UPP.WASH PIPE C30 - 70
441103	PUMP FEET
450107	CLAMP FE ZN 38-50 H=12,2
450114	CLAMP FE ZN.22-32 H=12,2
450135	CLAMP FE ZN. 44-56 H=12,2
631207	CONDENSER 12,5MF. 450V 85C



6 - Pump

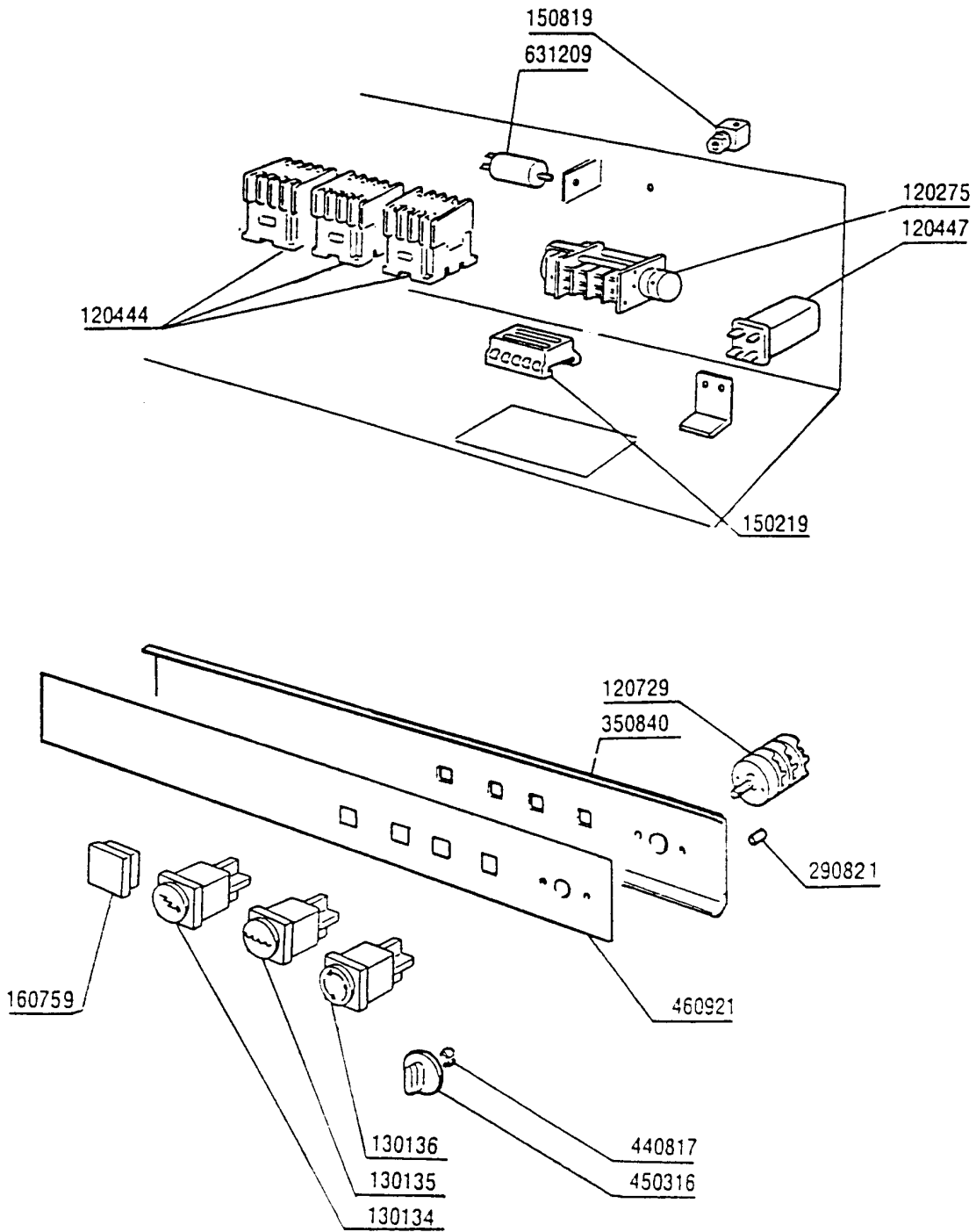
CODE	DESCRIPTION
100384	PUMP HP 1 240/1-50HZ-1219 1219
100602	PUMP HP 1 240V 50 HZ FI 1219
100612	PUMP HP 1 220/1/60HZ F 1219
630113	VOLUTE FIR HP0,5-1,55
630214	FLANGE PUMP HP0,75-1-1,5
630219	FAN HOUSING FIR HP.0,75-1
630303	FAN IMPELL.OF PUMP HP 0,5-0,7
630410	O-RING PUMP FI HP0,5-0,75-1
630510	PUMP SEAL HP0,5-0,75
631627	PUMP IMPELLER FI D103 HP 1-1,5
631643	IMPELLER HP1/1,5 60HZD.90-1219

7 - Rinse assembly



7 - Rinse assembly

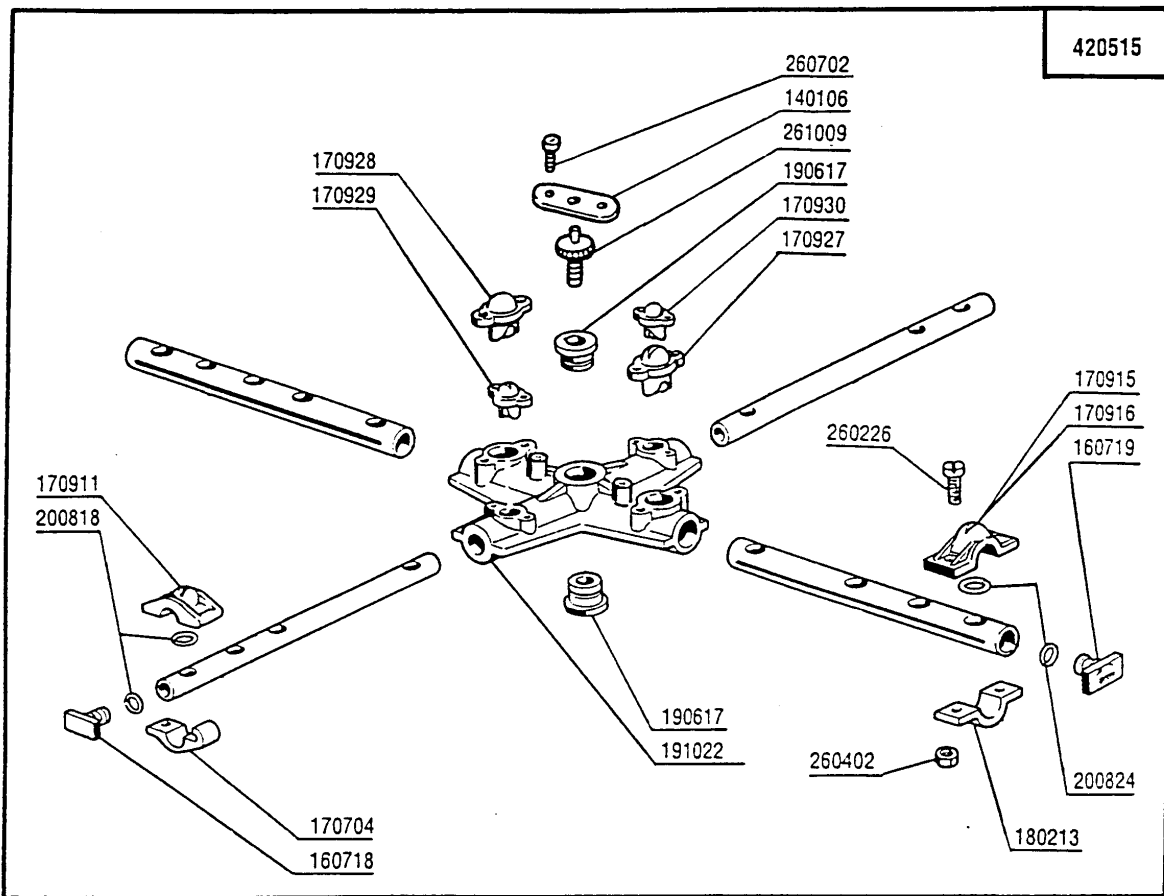
CODE	DESCRIPTION
110331	HEAT.ELEMENT 4200W 230/400V
120145	SOLENOID VALVE 12 LT 1 WAY
120501	THERMOSTAT 30/90°C
120519	SECURITY THERMOSTAT 95-125°C
160108	INJECT.INLET HOSE D.8X5
160115	PL.TUBE.D.9.5 B41 (3/8) C30-
161102	ELEMENT COVER MOPL.
180123	CONNECTION NUT / RINSE 5/8 C30
180403	TEE-NIPPLE F2-F300-B10-11
180408	TEE-NIPPLE F.INJECT.W/CENTR.RE
190203	LOWER TEE WASH-RINSE F2-45-55-
190309	CONNECTION STRAIGHT 3/8"B41C30
190315	ELL RINSE C30-70
191040	FRAME F.THERMOSTAT KNOB
200117	RUBBER HOSE 7X16
200122	HOSE 11X19
200457	GASKET D.24X16X3 NEOPRENE
200715	HOSE WATER INLET 2M STAINL.ST
200815	O-RING F. HEAT.ELEM.
270118	NUTS FOR ELBOW 5/8 C30-70
330331	BOOSTER (330342)
330725	STANDARD BRACKET F.SOLEN.VALV
331726	BRACKET FOR 3 THERMOSTATS
450102	CLAMP FE ZN 11-17 H=9
450103	CLAMP FE ZN. 13-20 H=9
450315	KNOB F. THERMOSTAT 90°
620120	RINSE AID INJECTOR
620209	INLET WATER FILTER
630969	COIL S4216 220/50HZ



8 - Control Box

CODE	DESCRIPTION
120275	TIMER
120444	CONTACTOR 9A 220V 50HZ
120447	AUXIL.RELAY 16A 220V C70-85-14
120729	EIGHT-POLE SWITCH 16A 5 POS.
130134	PILOT LAMP 220V
130135	PILOT LAMP: MACHINE READY B10>
130136	PILOT LAMP WORKING MACHINE
150219	TERMINAL BLOCK 5P MMQ165VD26
150819	CABLE HOLDER PG16 WITH HOLE
160759	PLUG WITH SYMBOL C70
290821	DISTANCE PIECE FOR SWITCH
350840	PLATE SUPPORT C70-C85-C140
440817	SNAP RING LSCB/1853/17/00
450316	CONTROL KNOB TWO COLOURS B-BT-
460921	PANEL C70-C85-C140
631209	ANTI-NOISE FILTER

9 - Wash arm



9 - Wash arm

CODE	DESCRIPTION
140106	PLATE F.CLAMP SCREW/WASH-RINSE
160718	PLUG F. RINSE ARM F2-C34M
160719	PLUG FOR WASH ARM D.18
170704	RINSE NOZZLE BOTTOM F-B-C33
170911	RINSE JET B23-F2-C34
170915	RIGHT JET B-F
170916	LEFT JET B-F
170927	WASH JET F2-C-GRAY
170928	IDLE JET F2-C-GRAY
170929	RINSE JET F2-C-GRAY
170930	IDLE JET F2-C-GRAY
180213	FLANGE F.JET LOCKING F2-C34
190617	BUSH
191022	WASH ARM CENTRAL CROSS F-B
200818	O-RING 1,78 X 6,75 X 10,31
200824	O-RING 1,78X12,42X15,98
260226	STAINL.ST TCP SCREW 4X12 A2 UN
260402	STAINLESS STEEL NUT D4 UNI 55
260702	SELF-TAPPING SCREW 4,2X9,5 DIN
261009	RETAIN.SCREW FOR WASH-RINSE AR
420515	WASH-RINSE ARM F45-C85